



THE  
*Upgrade*  
YOU *Need*



GAMYA

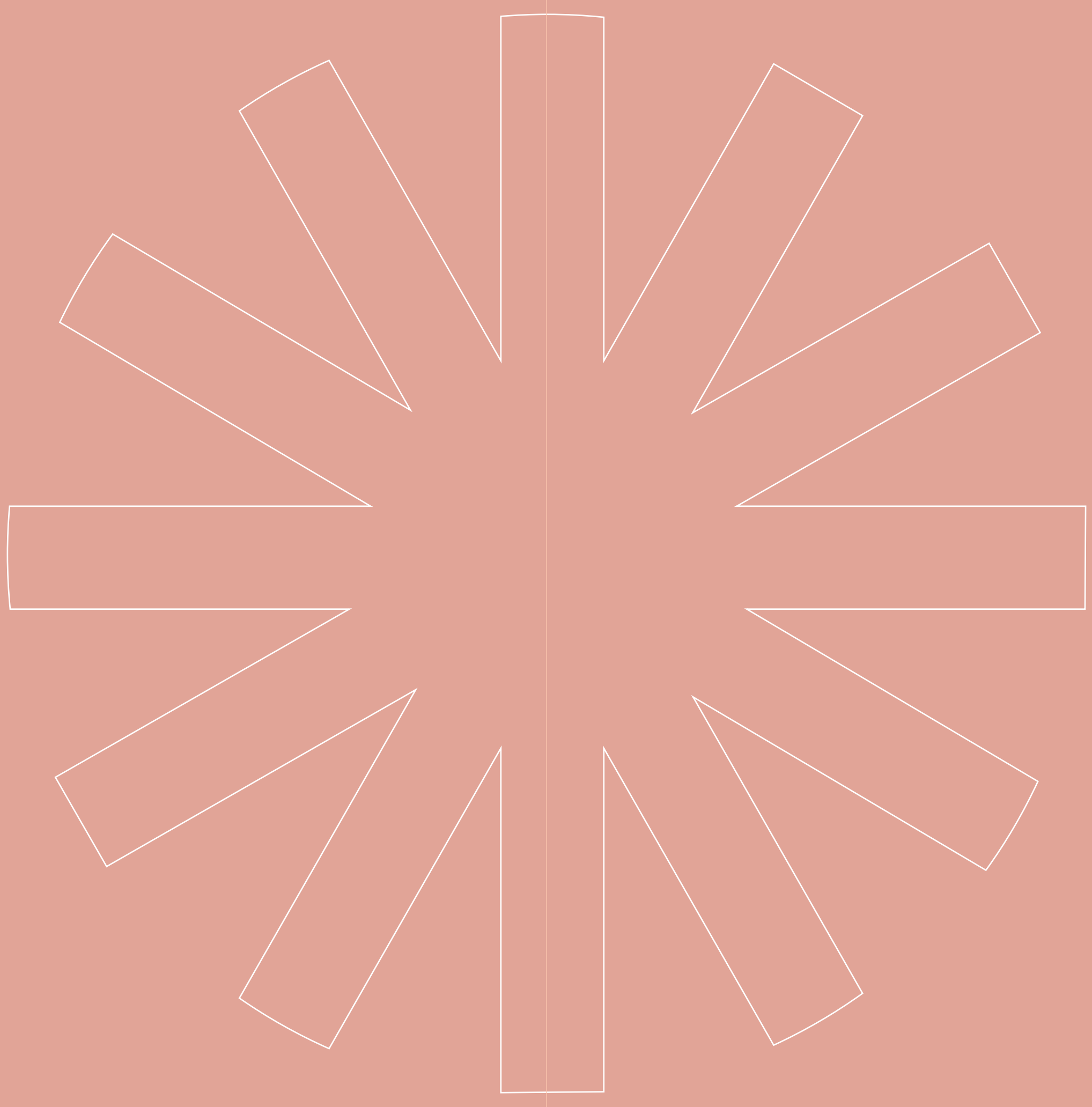
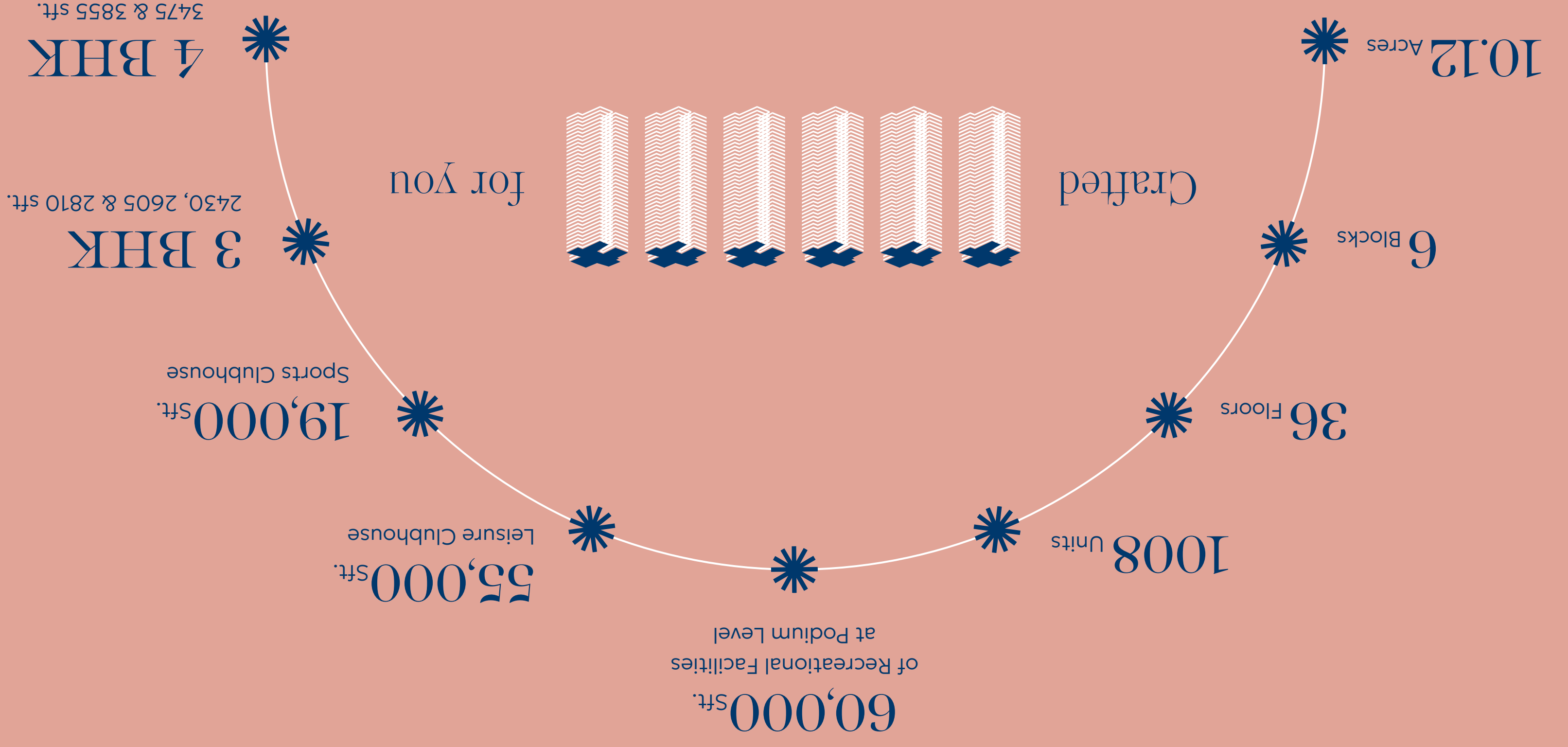
# Imagine

discovering an upgrade you never knew you needed.

Unveiling Supadha's dazzling new venture, "**GAMYA**," indulging you in a rainbow of diverse amenities certain to enhance your senses.

Every distinct feature is poised to offer you a feeling a delight and comfort just like the shades of a rainbow.

We assure you a colorful upgrade with unmatched luxury and opulence.



Your  
Gateway  
\*\*\* to \*\*\*  
Extravagance



A masterpiece of living, created for the elite.

# Your Destiny

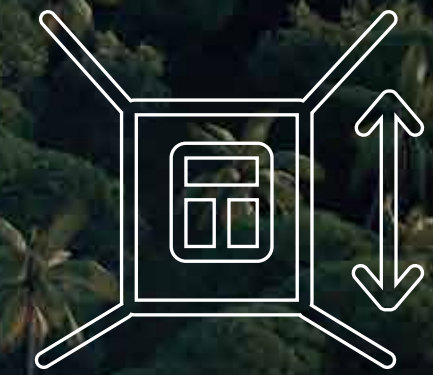


At Supadha's Gamyra, we believe in creating spaces that guide you to your true home, fulfilling your deepest aspirations and desires. This isn't just an upgrade; it's the upliftment you are destined for. With Gamyra, every element is meticulously designed to ensure your living experience is nothing short of

extraordinary. Embrace this transformation and step into a home that resonates with your journey and aspirations.

**At Gamyra, your destiny of unparalleled luxury and comfort becomes a reality!**

With harmony in nature

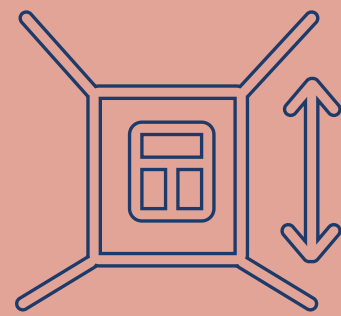


# 11 ft of elevated comfort

Enjoy open, airy  
apartments with  
11 ft high  
slab-to-slab  
ceilings.

Crafted for  
**YOU**

Have you heard?



Experience true harmony with nature in this stunning development, spanning 10.12 acres with six towers and 36 floors. Enjoy eco-friendly living amidst serene greenery, featuring refined aluminum-framed windows, elegant French doors, and iconic main doors that add sophistication to every apartment. Embrace a lifestyle where elegance meets tranquility!

### Refined Windows & Doors

- Aluminum-framed windows
- French doors

### Grand Entrance

- Imposing 8-foot main doors add a touch of elegance to every apartment



Experience  
luxury at  
new heights

2  
Clubhouses  
with 74,000 Sq. Ft.  
of Space

60,000 Sft.  
of Recreational  
Facilities  
at Podium  
Level

Low density  
only  
98 units  
per acre

Corner  
Comfort  
in every  
residence

A vibrant community for all ages, featuring a stunning double-height ceiling and 50,000 sft. of open-air recreational amenities in 10.12 acres with health-focused spaces, including open-air gyms, lounges, and two inviting clubhouses. Embrace the lifestyle that brings people together, where every moment is an opportunity for connection and joy.

### Double Height Ceiling Lobby:

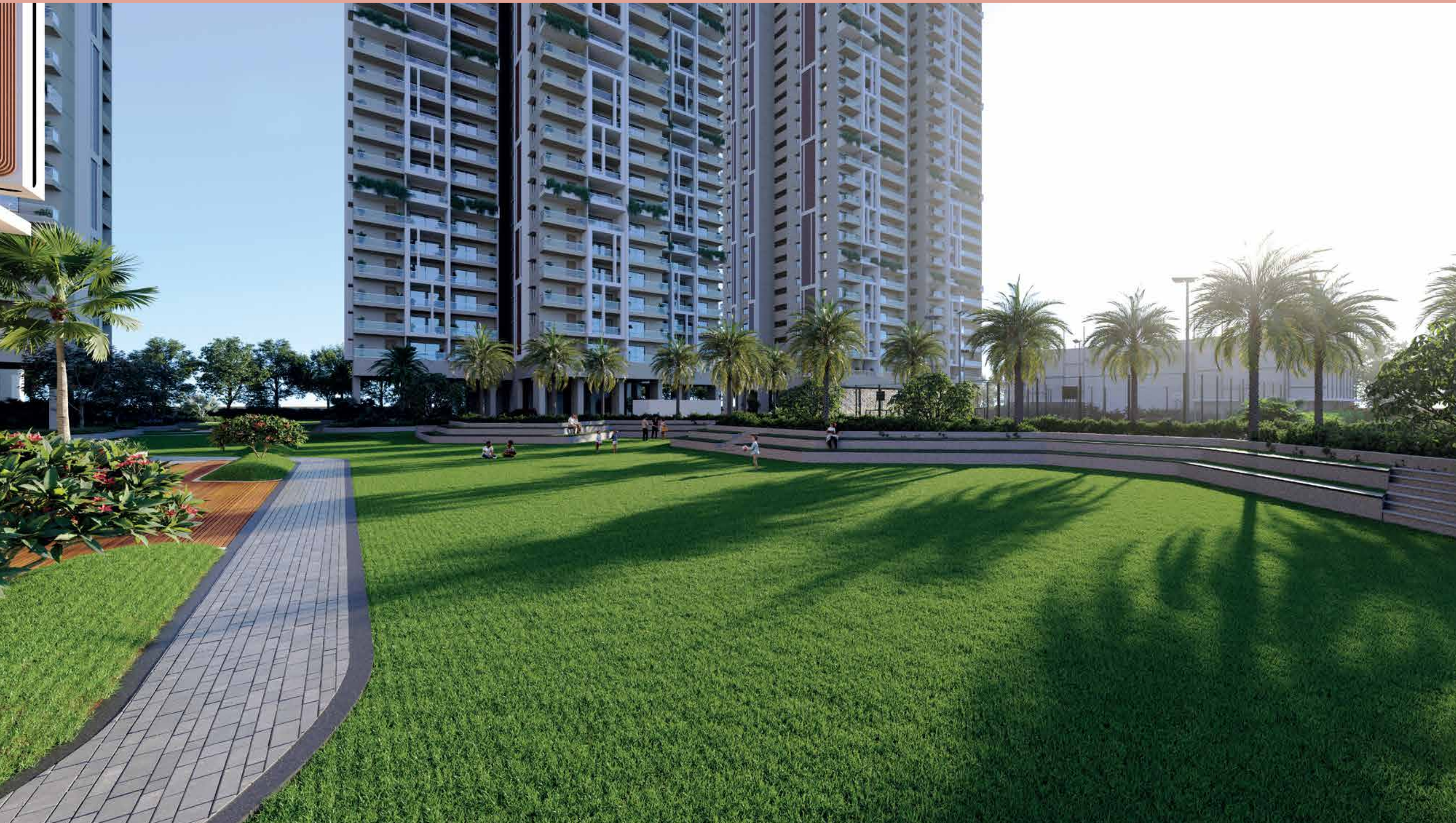
- Feel the grandeur in our double-height lobby, where soaring ceilings create a sense of light and luxury

### Podium Level Amenities:

- 2 Multi-purpose courts
- Herbal garden
- Thematic plantation
- Event lawn
- Open amphitheatre
- Golf putting
- Box cricket
- Zen garden
- Yoga lawn
- Meditation lawn
- Senior citizen seating area
- Open gym
- Leisure lawn
- Green wall
- Open movie screen
- Youngster's corner
- Work from garden
- Reading corner
- Kitty party area
- Mound garden

# Vehicle Free and Abundant Pure Green Joy!

In this expansive 10.12-acre community, immerse yourself in a vehicle-free green wonderland where you and your kids can soak up the true harmony of nature and create magical memories.



## Experience the best in Comfort & Leisure



### Legend

- |   |                                 |
|---|---------------------------------|
| 1. Entry  | 26. Play area for kids          |
| 2. Exit   | 27. Senior citizen seating area |
| 3. Security cabin                                 | 28. Open gym                    |
| 4. Branding with plantation                       | 29. Crossfit area               |
| 5. Entrance plaza                                 | 30. Lounge seating              |
| 6. Pathway  | 31. Free play lawn              |
| 7. Water feature & Clubhouse 1 dropoff area       | 32. Floor games                 |
| 8. Natures trail with butterfly garden            | 33. Indoor games                |
| 9. Herbal garden                                  | 34. Table tennis                |
| 10. Thematic plantation                           | 35. Table games                 |
| 11. Stage   | 36. Leisure lawn                |
| 12. Event lawn                                    | 37. Chit chat corner            |
| 13. Open amphitheatre                             | 38. Green wall                  |
| 14. Strolling garden                              | 39. Open movie screen           |
| 15. Multi-purpose courts (Badminton & Basketball) | 40. Youngster's corner          |
| 16. Connecting plaza                              | 41. Artist deck                 |
| 17. Golf putting                                  | 42. Work from garden            |
| 18. Box cricket                                   | 43. Reading corner              |
| 19. Zen garden and reflexology path               | 44. Community farming           |
| 20. Yoga deck                                     | 45. Multi-purpose lawn          |
| 21. Yoga lawn                                     | 46. Alfresco dining             |
| 22. Meditation deck                               | 47. Kitty party area            |
| 23. Meditation lawn                               | 48. Socializing area            |
| 24. Sand pit with climbing wall                   | 49. Mound garden                |
| 25. Bowling                                       | 50. Bus dropoff and pickup      |

# 70+ Awesome Amenities Await!

Excited to offer a selection of 70 diverse amenities designed to enhance your everyday. From fitness facilities and relaxation spaces to social hubs and lounges, there's something for everyone. Are you ready to explore the possibilities?

Do you know  
that we have

70+

different ways  
to upgrade  
your daily life?

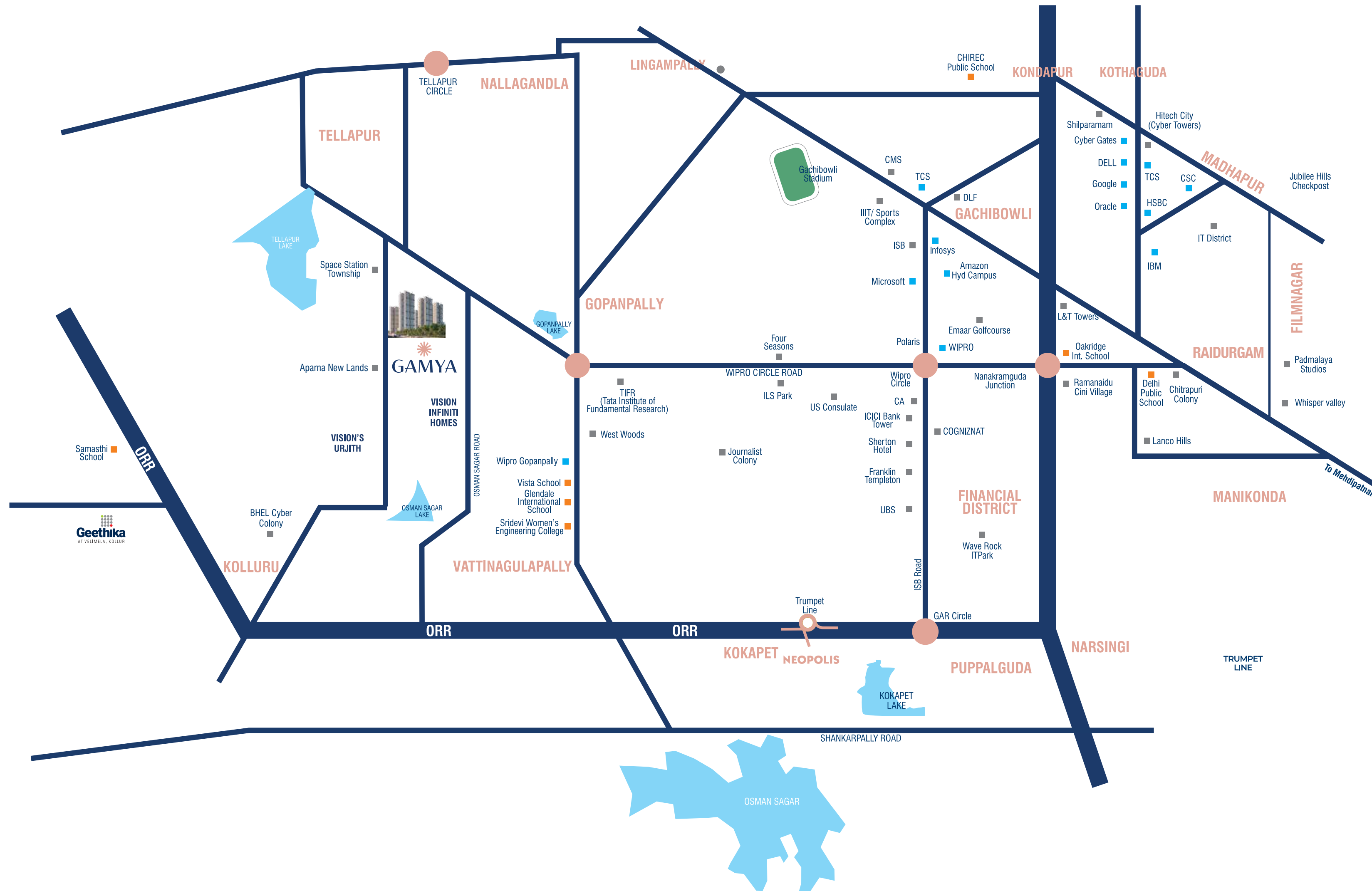


In the heart of  
**TELLAPUR**

Experience the upgrade you deserve by moving to Tellapur, a locality that perfectly blends convenience with modernity. With seamless access to major road networks, top IT hubs, renowned international schools, and diverse shopping and dining options, Tellapur promises an exceptional living experience. Choose Tellapur for a high-quality lifestyle in a vibrant and rapidly developing area.

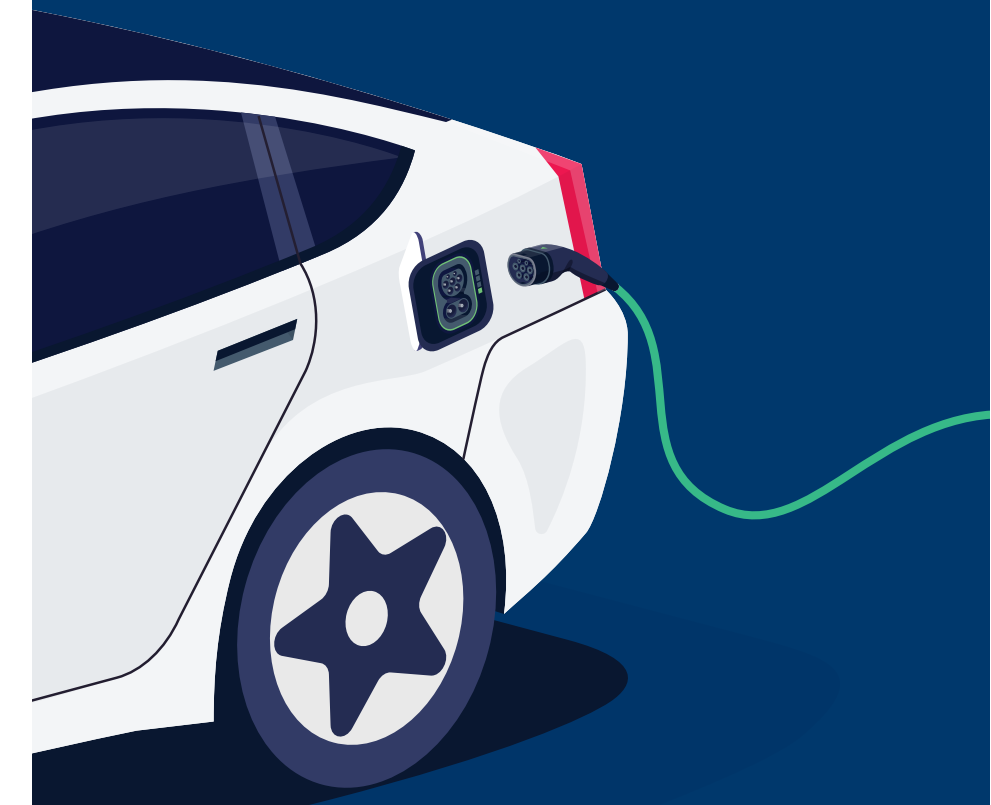
**Embrace your new home in Tellapur and be part of its exciting future.**

# LOCATION



Your  
**EV'S**  
Happy  
Place!

Each residence now includes an EV charging point in the parking area.





Ready to  
Plug-in and  
Power up?



## Location Highlights

Tellapur combines excellent connectivity, ongoing infrastructure development, and proximity to key commercial and educational hubs, making it an attractive destination for potential homeowners.



Kollur ORR Exit / Entry:  
4 mins

Financial District:  
6 mins

Gachibowli:  
10 mins

Hitech City:  
25 mins

RGI Airport:  
30 mins



Birla Open Minds School:  
5 mins

Manthan International School:  
5 mins

Samashti International School:  
10 mins

Kairos International School:  
10 mins

The Gaudium School:  
14 mins

Sancta Maria International School:  
15 mins



Continental Hospital:  
10 mins

BHEL Hospital:  
10 mins

Citizens Hospital:  
12 mins

Star & Rainbow Hospitals:  
17 mins

Apollo Hospital:  
17 mins



Neo Mall:  
10 mins

GSM Mall:  
15 mins



Sheraton Hotel:  
7 mins

Hyatt Hotel:  
10 mins

Holiday Inn Hotel:  
10 mins



Golf Course:  
10 mins



GREEN LAWN

## Spaces to Relax, Create, and Connect

Discover spaces tailored to your lifestyle. Connect at the Socializing Corner, unwind in the Lounge Seating area, boost productivity in the Co-working Garden space or get creative at the Artist Deck.

Designed for relaxation, work, and inspiration—all in one place.



JOGGING TRACK



ARTIST DECK



SEATING AREA

# Challenge, Play, and Stay Active

Our range of amenities offer endless fun and fitness for all.

Challenge yourself on the Climbing Wall with Sandpit, go for that ultimate strike at our Bowling Alley, or break a sweat at the Open Gym.





# A Dual Pool Experience

Enjoy a private temperature-controlled pool, a wave pool, a soothing jacuzzi, and a standard pool for everyday fun.

Your getaway to  
Extravagance

Welcome to a world where your daily life is packed with energizing workouts, soothing swims in the pool, and joyful gatherings with friends across our two stunning clubhouses, totaling an expansive

**74,000 sq.ft.**

Embrace the exceptional life you deserve!

# G Level

## A Warm Welcome Awaits You

Here, it's not just about the space, but the experiences you'll create. Whether you're sharing stories, laughs, or quiet moments, the clubhouse is your hub for lasting memories.

- Grocery
- Creche
- Double Height Reception Lobby
- Seating Lounge



Are you aware?



## 1<sup>st</sup> Level

Relax and Recharge in Style



Go through our inviting seating lobby and versatile multi-purpose halls, perfect for casual meetings or gatherings.

- 2 Multi-purpose Halls
- Seating Lobby

## 2<sup>nd</sup> Level

Endless Fun Welcomes You!



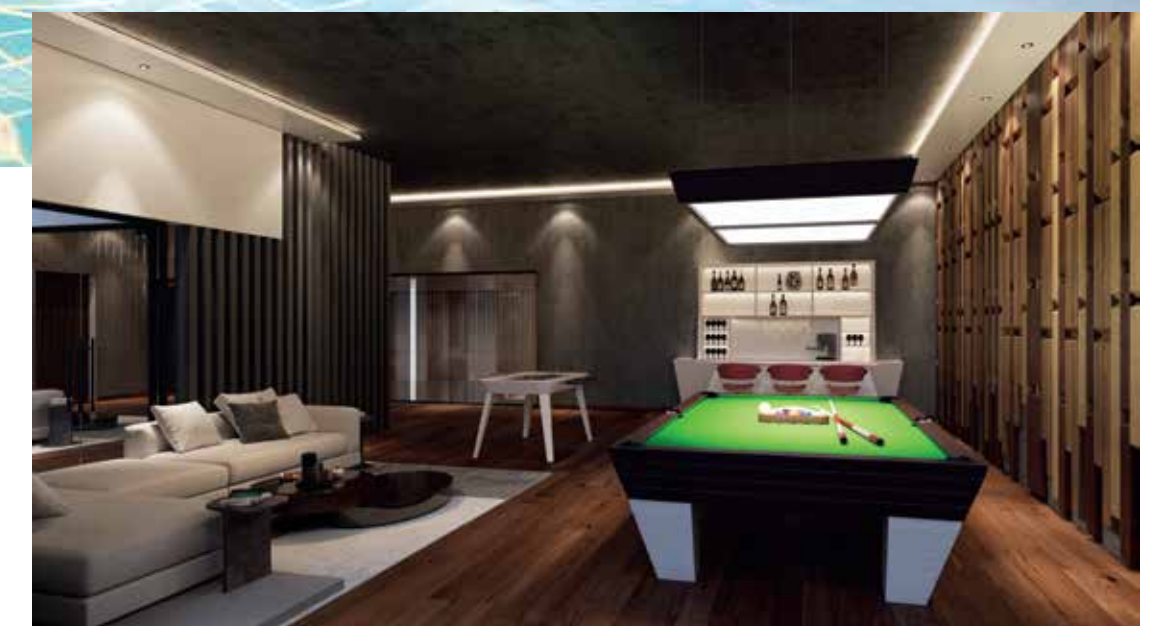
Enjoy movie nights in the home theatre, relax at the café and juice bar lounges, and dive into our inviting pools. With a lively pool deck and indoor games, there's something for everyone!

- Home Theatre
- Kids Pool
- Cafe Bar Lounge
- Pool Deck
- Juice Bar Lounge
- Indoor Games
- Swimming Pool

Chill Out in Style!



Feel the highest level of relaxation in our spacious adult and children's pools, along with the terrace's temperature-controlled pool.





# 3<sup>rd</sup> Level

## Revitalize Your Fitness Routine!

Dance it out in aerobics, meditate in peace, or power up in the gym! With a serene green deck and comfy seating lounge, plus a physiotherapy clinic, your wellness journey starts here.



- Aerobics & Fitness Studio
- Yoga & Meditation
- Gym
- Changing Rooms
- Green Deck
- Seating Lounge
- Physiotherapy / Clinic

# 4<sup>th</sup> Level

Refresh,  
Revive,  
Repeat!

Detox in the sauna, indulge in a soothing spa day, or get glam at the salon. Pure bliss is just steps away!



- Sauna
- Spa
- Salon
- Reading Lounge
- Gym
- Green Deck

## 5<sup>th</sup> Level

Stay, Play, and Chill Out!



Host gatherings on the open party terrace, relax in the seating lounge, and enjoy the lush green deck. Experience ultimate comfort in our inviting guest rooms and suites.

- Guest Rooms
- Open Party Terrace
- Seating Lounge
- 6 Guest Suites
- Green Deck

## Terrace Level



## Wave Goodbye to Stress!

Have a splash-tastic time in our temperature-controlled pool. Soak up the sun on the pool deck and open terrace.

- Temperature Controlled Pool
- Pool Deck Area
- Open Terrace

# Athletic arena (Sports complex)



Step into Gamy's Sports Complex and discover top notch facilities to elevate your sporting experience. Have fun with the thrilling matches on our badminton court, billiards, table tennis, squash etc. Be it competitive athletics or recreational fun, Gamy's sports complex is ready for you!



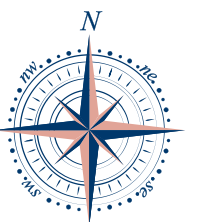
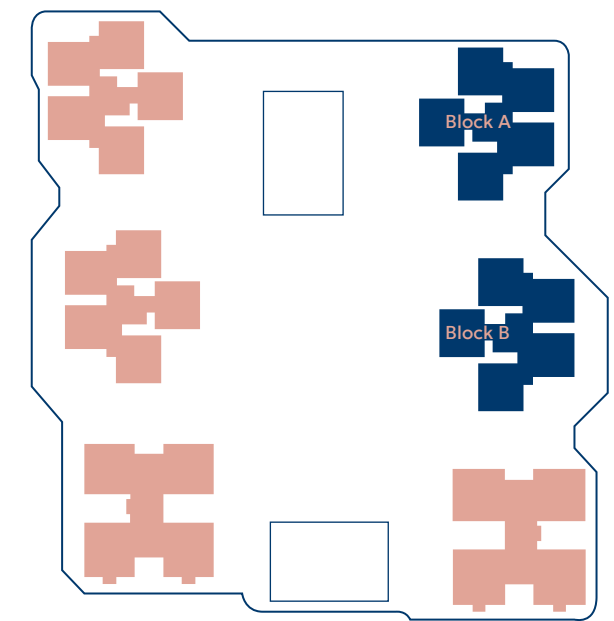
## Floor Plans

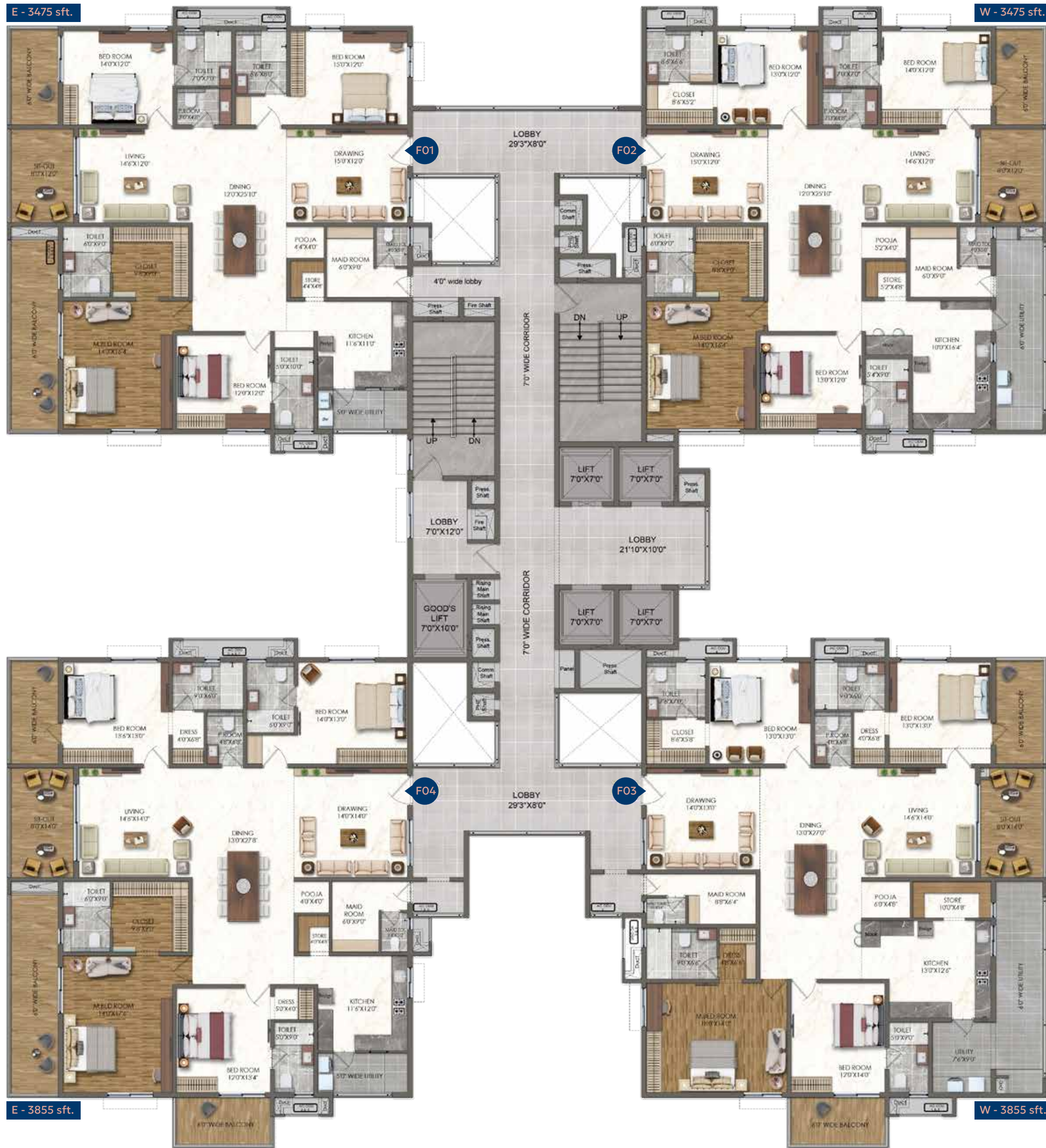
A look at our expansive site plan designed to augment every aspect of urban living. Six meticulously designed blocks offer diverse residential options, each blending modern comfort with sleek design. Our clubhouse works as the vibrant heart of community life, featuring luxurious amenities and communal spaces for gatherings and fun.



# Block A & B

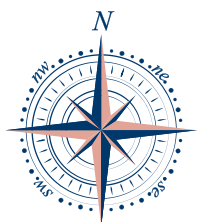
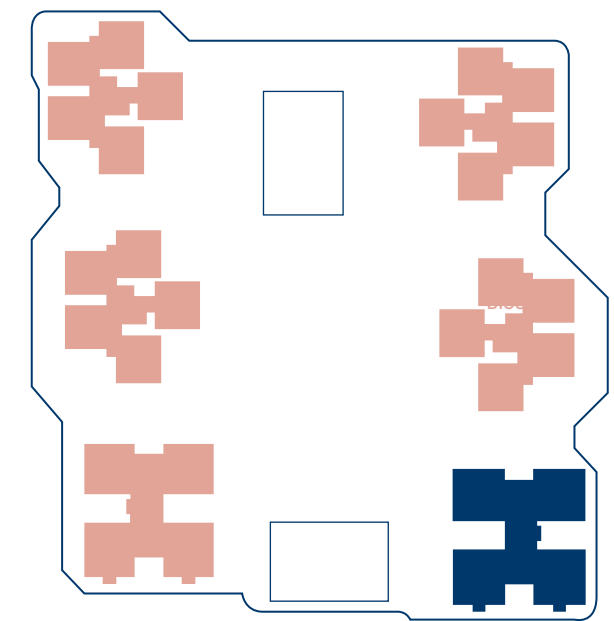
## Typical Floor Plan - 3 BHK

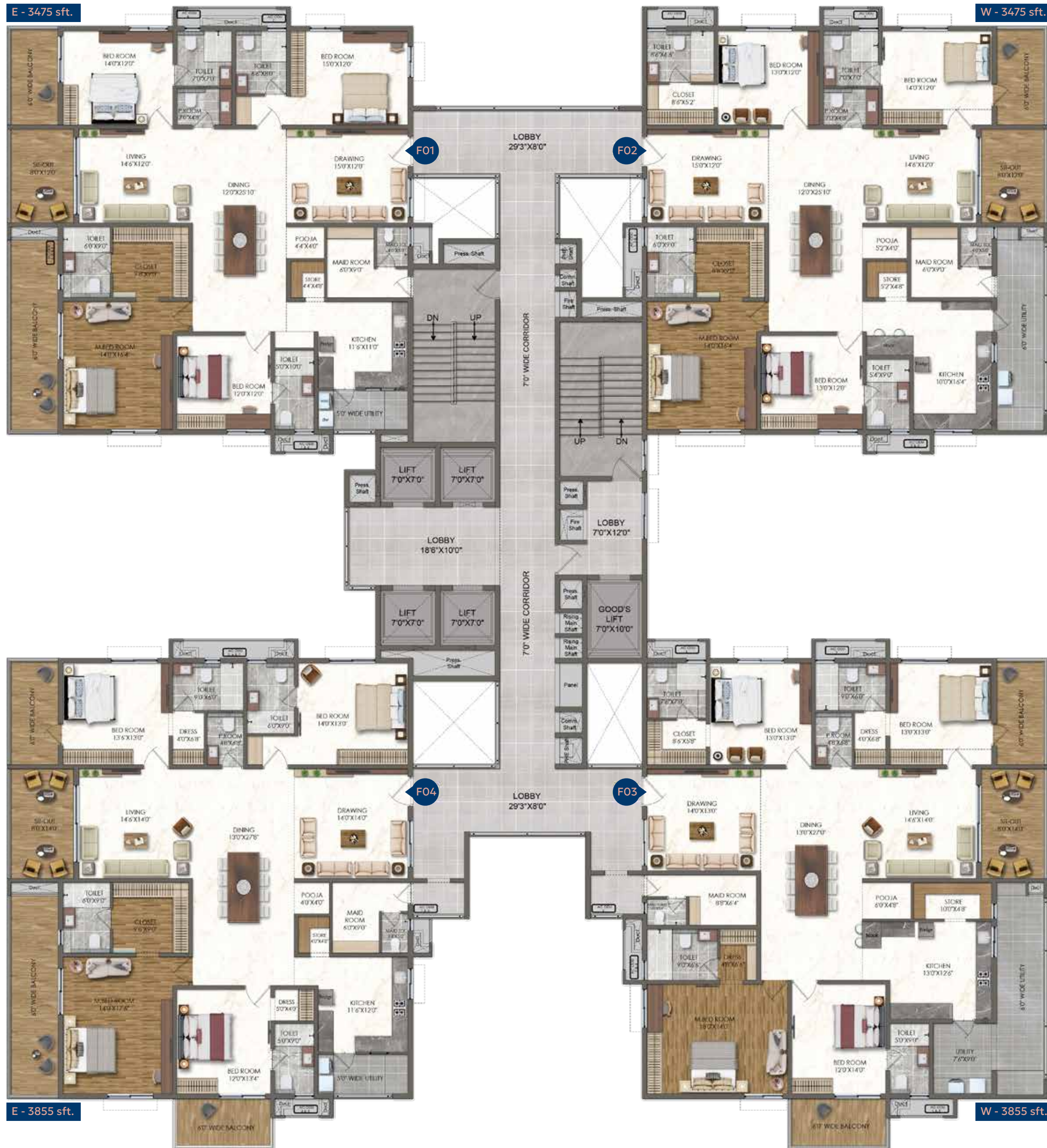




# Block C

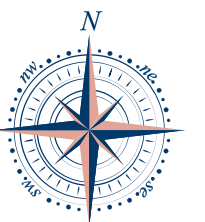
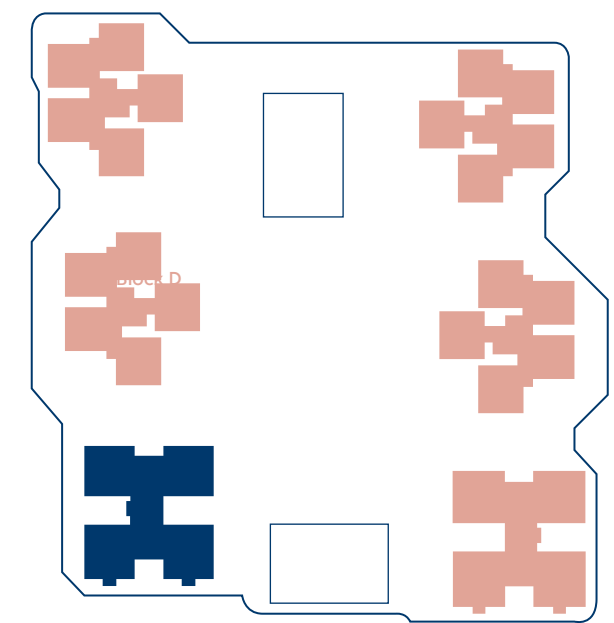
Typical Floor Plan - 3 & 4 BHK





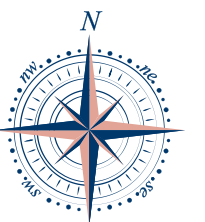
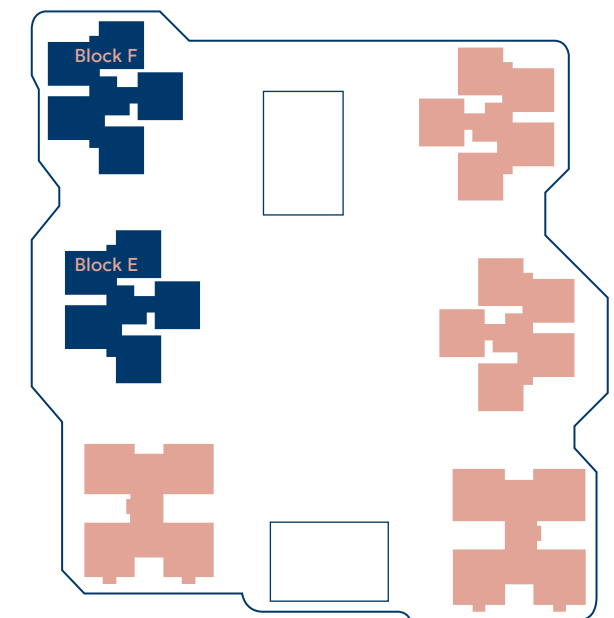
# Block D

## Typical Floor Plan - 4 BHK



# Block E & F

## Typical Floor Plan - 3 BHK



## Crafting Spaces That Reflect You

At Gamy, we specialize in constructing spaces that are built to last and designed for modern living. With a focus on quality and attention to detail, we bring your vision to life, creating homes that inspire comfort and functionality.



# Specifications



## STRUCTURE

STRUCUTRE : R.C.C Framed Structure

R.C.C. Shear Wall Framed Structure to withstand Wind & Seismic Loads.

WALLS : R.C.C. Shear Wall



## WALL FINISHES / PAINTING

EXTERNAL: Textured finish with Two Coats of Exterior Emulsion Paint of Reputed Make.

INTERNAL: Smooth putty finish with 2 Coats of Premium Acrylic Emulsion Paint of Reputed make over a Coat of Primer.



## FLOORING FINISHES

DRAWING /LIVING / DINING / ALL BED ROOMS / POOJA: Premium quality Large format Vitrified Tile Flooring & Skirting as per design.

KITCHEN: Premium quality Large Format Matte finish Vitrified Tile Flooring.

ALL BATHROOMS: Premium quality Large Format Matte finish Vitrified Tile Flooring.

ALL BALCONIES: Vitrified Tile in wooden Finish / Matte Finish Vitrified Tile Flooring

UTILITY: Non-Slip Vitrified Tiles in wooden finish.

ENTRANCE LOUNGE & LIFT LOBBY: Granite/Marble flooring with Designer False Ceiling.

COMMON AREAS (CORRIDOR): Full Body / Premium quality Vitrified Tile Flooring

STAIRCASES: Tandoor / Kota Stone



## DADOING

KITCHEN DADOING: GVT Tile dado up to 2'-0" height above Kitchen Platform of Reputed Make.(Shall be provided at extra cost)

BATHROOMS: Premium Quality Vitrified Tile Dado up to 8'-0" height of Reputed Make.

UTILITY: Premium Quality Vitrified Tile Dado upto 3' Height of Reputed Make.



## KITCHEN

WATER PROVISION: Separate drinking water HMWSSB provision along with borewell water.

OTHER ACCESSORIES: Provision for fixing of Water Purifier, Exhaust Fan, or Chimney.



## DOORS & WINDOWS

MAIN DOOR: Factory Made Teak Veneered Door Frame & Shutter finished with Good quality Melamine Polish with Hardware of Reputed Make.

INTERNAL DOORS: Factory Made Finger Joint wood Frame & Laminated Shutter with Hardware of Reputed Make.

TOILET DOORS: Factory Made Finger Joint wood Frame & Laminated Shutter with Hardware of Reputed Make.

SIT-OUTS / BALCONY DOORS: Aluminium Door Frame of Reputed Profile Sections, with Tinted Toughened / HS Glass Paneled Shutters designed as per relevant IS code and Designer Hardware of Reputed Make with provision for Mosquito Mesh.

WINDOWS: Aluminium Window of Reputed Profile Sections with Tinted Toughened / HS Glass with Suitable Finishes as per Design with Mosquito mesh for all sliding windows designed as per relevant IS code



## RAILING

BALCONY / SIT-OUT: Laminated Glass Railing designed as per relevant IS codes.

STAIRCASES: SS / MS Railing as per design intent.

VENTILATION CUT-OUT: MS Railing as per design intent.



## UTILITY

WASHING MACHINE: Provision for Washing Machine / Dishwasher & Wet Area for Vessel Washing etc.



## CP & SANITARY FIXTURES

TOILETS: All C.P. Fittings are of reputed make.



## ELECTRICAL FIXTURES

### INTERNAL ELECTRICAL FIXTURES

Provision for Geysers in all Bathrooms

Provision for Exhaust Fans in all bathrooms

Provision for Copper piping for Air Conditioning Units for all Flats

Provision for Power outlets for Air Conditioners in all Bed Rooms Drawing, & living rooms.

Plug points for T.V. & Audio Systems etc.

3 phase supply for each unit with individual meter boards

Miniature Circuit breakers (MCB) for each distribution board of reputed make.

Concealed Copper Wiring of Reputed Make.

Switches of Reputed Make.



## EV CHARGING

Provision for One EV charging point for each flat in car parking area as per design intent & applicable norms.



## KITCHEN / UTILITY AREA

Power Socket for Cooking Range, Chimney, Refrigerator, Microwave Ovens, Mixer / Grinders in Kitchen, Washing Machine, and dishwasher in Utility Area.



## TELECOMMUNICATIONS, CABLE TV & INTERNET

TELEPHONE POINTS: Telephone points in Drawing / Living Rooms / Master Bed Room

INTERCOM FACILITY: Intercom facility to all the units connecting Security

CABLE TV: Provision for Cable Connection in Master Bed Room & Living Room.

INTERNET: One Internet connection Provision for all bedrooms.



## ELEVATORS / LIFTS

PASSENGER LIFTS: Four (4) passenger + one (1) service high speed lifts in each tower with all necessary safety and emergency aspects.

FLOORING: Entrance with Granite / Marble Cladding.



## WSP & STP

Domestic Water made available through an exclusive Water Softening Plant

A Sewage Treatment plant of adequate capacity as per norms will be provided inside the project, Softening sewage water will be used for landscaping and flushing purposes.

Rain Water Harvesting at regular intervals is provided for recharging groundwater levels as per the norms.

Water meters for each unit for domestic & drinking water



## PARKING LEVELS



## PARKING MANAGEMENT

Entire parking is well designed to suit the number of Car Parks provided.

Parking signage and equipment at required places to ease the traffic flow.



## POWER BACK -UP

100% DG Set backup with acoustic enclosure & A.M.F



## SECURITY / BMS:

Sophisticated round-the-clock security / Surveillance System.'

Surveillance cameras at the main security and entrance of each block to monitor.

A panic button and intercom are provided in the lifts connected to the security room.

Solar power fencing around the compound.



## CENTRALIZED BILLING

Billing shall be done for the Consumption of Electricity, Water & LPG with a prepaid meters system.



## FIRE & SAFETY

Fire hydrant and fire sprinkler system in all floors and basements as per NBC Norms.

Fire alarm and Public Address system in all floors and parking areas (basements) as per NBC Norms.

The Control panel will be kept at main security.



## LPG

Supply of gas from centralized Gas bank to all individual flats Authorised Gas Bank



## SOLAR POWER

Solar Power shall be provided and shall be connected to Common Area Grid for Optimization of Common Area.

## About Supadha's projects & the people

With 17 years of experience in the real estate industry, we're thrilled to share that we're launching a new project with our same passion and focus for creating Infinity Homes. Under the leadership of our Managing Director, Brahmaiah Kolluri, we're driven by deep industry knowledge and a knack for spotting trends. His commitment to excellence keeps us ahead of the curve, enabling us to build outstanding homes that truly meet the needs of our clients.

**SUPADHA**

County



Infinity homes



Urjith



Gahana



Learn more about the esteemed parent group behind Supadha's Gamyra, their legacy of excellence, and their commitment to quality and customer satisfaction.

Your dream home awaits at Supadha's Gamyra. Take the next step towards the lifestyle you are destined for. Contact us today to schedule a visit and experience the future of luxury living.



At Supadha, we are privileged to collaborate with Genesis Planners, a premier architectural firm with over 27 years of experience. Their designs seamlessly blend innovation with sustainability, reflecting a deep understanding of both modern theories and historical wisdom. Their designs reflect a profound understanding of both contemporary theories and historical insights, including the rich architectural wisdom of Vaastu. With a portfolio of over 150 million sq. ft and numerous awards, Genesis Planners excels in creating unique, award-winning spaces across diverse sectors. Their commitment to excellence and attention to detail make them an invaluable partner in our real estate ventures.



Project  
Consultants



